



# **Welt Union Teckel**

## **Anatomy of the Dachshund**

Illustration:

Matthias Haab

Wissenschaftlicher Zeichner

Veterinär-Chirurgische-Klinik

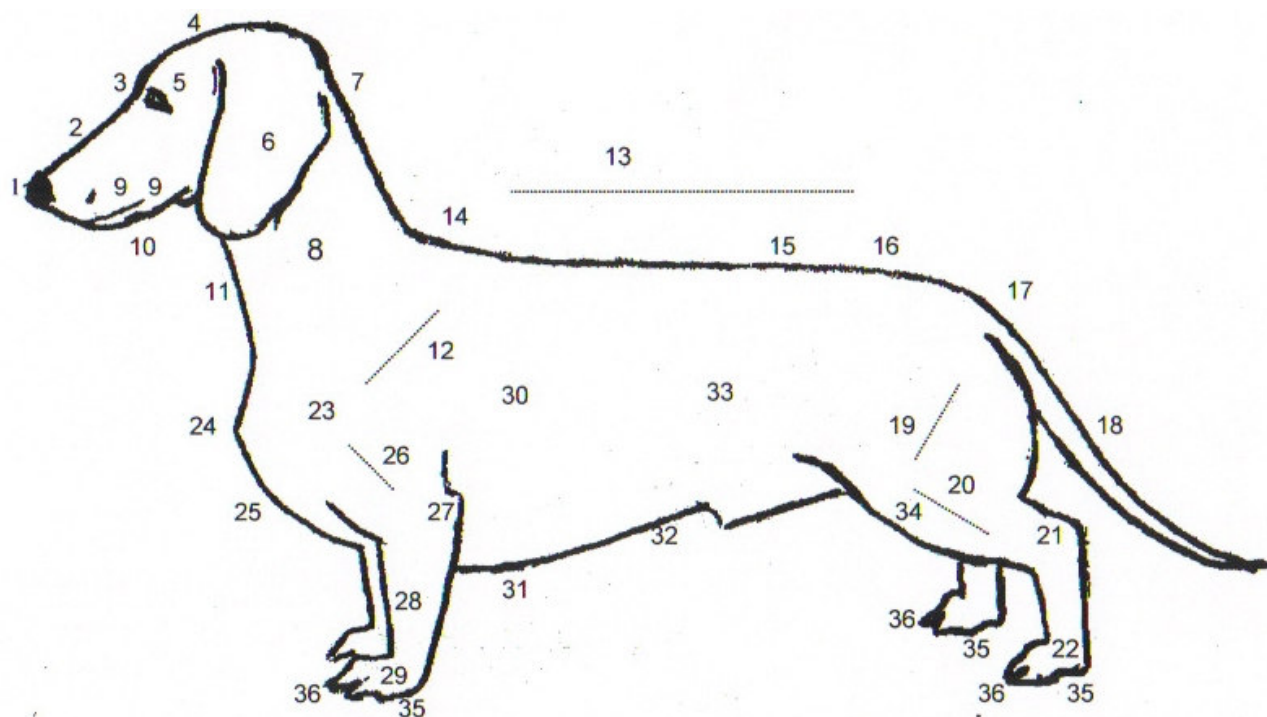
Universität Zürich

Winterthurerstrasse 260

CH-8057 Zürich

100.0

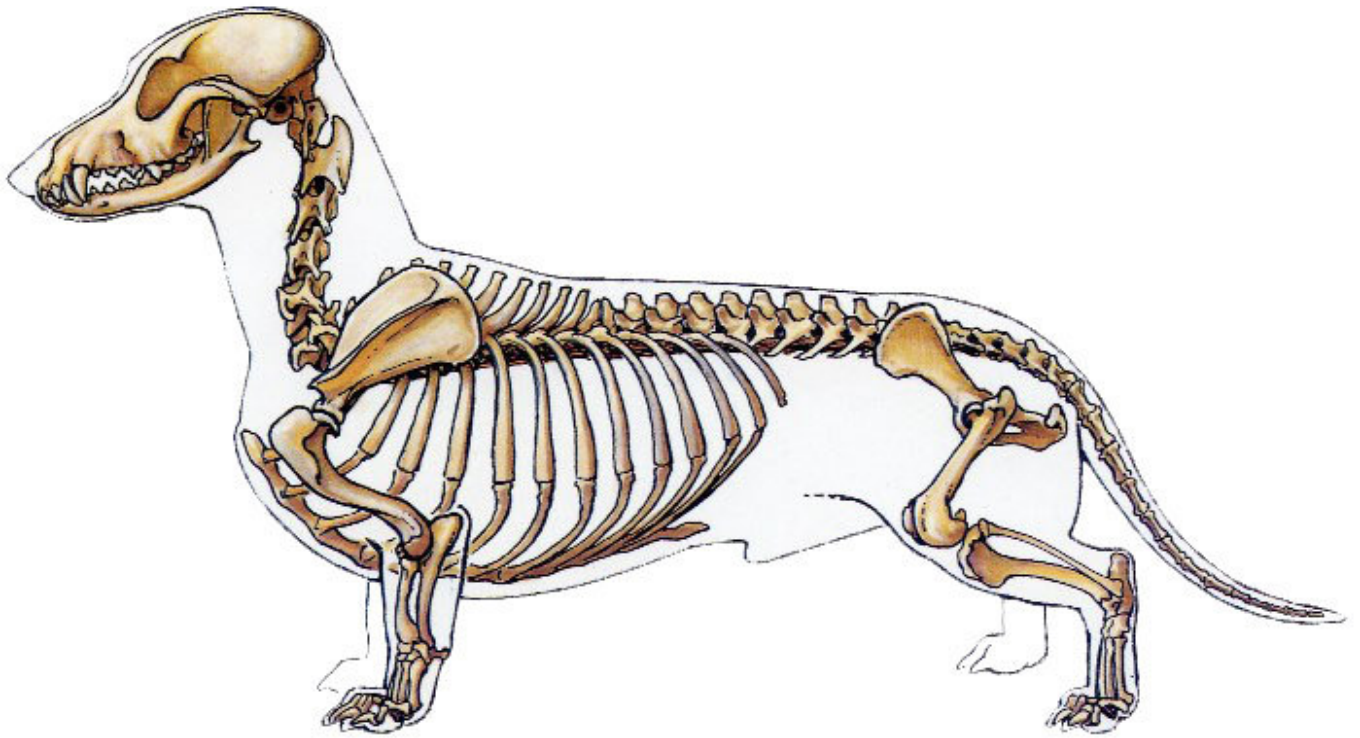
The Most Important Visible Body Parts of the Dachshund



- |                   |                |                   |                   |
|-------------------|----------------|-------------------|-------------------|
| 1 Nose            | 10 Lower Jaw   | 19 Upper Thigh    | 28 Pastern        |
| 2 Bridge of Nose  | 11 Dewlap      | 20 Lower Thigh    | 29 Front Paw      |
| 3 Stop            | 12 Shoulder    | 21 Hock Joint     | 30 Ribcage, Chest |
| 4 Top of Head     | 13 Back        | 22 Hind Paw       | 31 Keel           |
| 5 Eye             | 14 Withers     | 23 Shoulder Joint | 32 Underline      |
| 6 Ears            | 15 Loin        | 24 Prosternum     | 33 Flank          |
| 7 Back of Neck    | 16 Croup       | 25 Forechest      | 34 Stifle Joint   |
| 8 Neck            | 17 Set On Tail | 26 Upper Arm      | 35 Pad            |
| 9 Muzzle and Lips | 18 Tail        | 27 Elbow          | 36 Toes           |

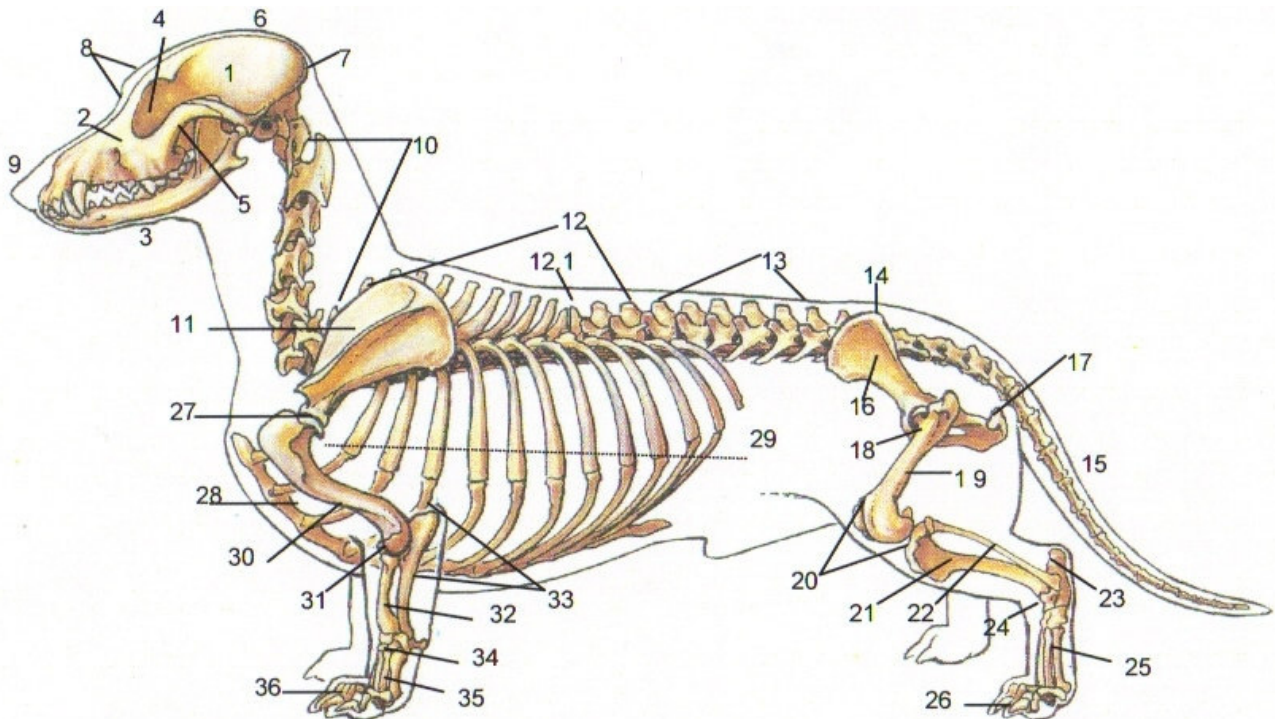
100.1

The Skeleton



## 100.2

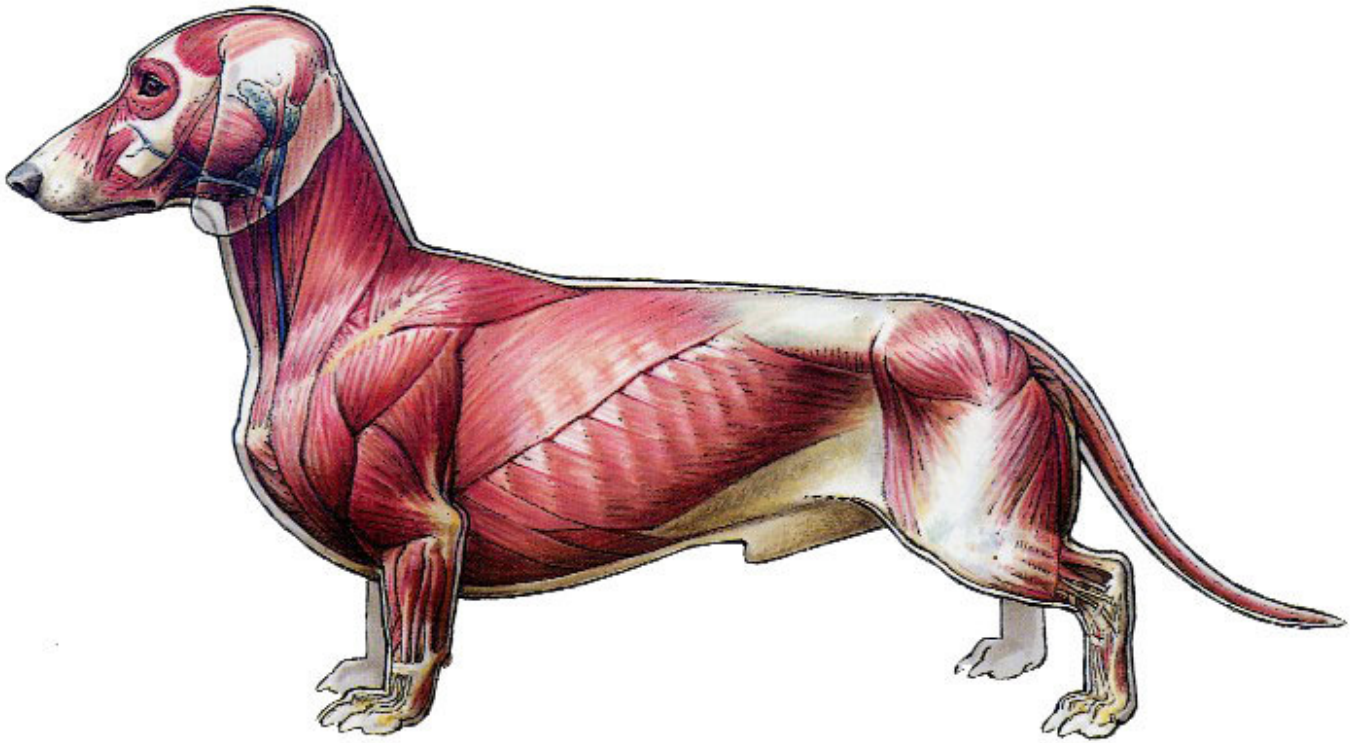
### The Most Important Skeletal Parts of the Dachshund



1 Brain Case/Cranium	11 Shoulderblade	19 Femur	27 Shoulder Joint
2 Foreface	12 Thoracic Vertebrae (13)	20 Stifle Joint with Patella	28 Sternum
3 Mandible	12.1 Transitional Vertebrae/Wechselwirbel	21 Tibia	29 Ribs (13)
4 Eye Socket	13 Lumbar Vertebrae (7)	22 Fibula	30 Humerus
5 Zygomatic Arch	14 Sacral Vertebrae (3)	23 Fibular Tarsal	31 Elbow Joint
6 Sagittal Crest	15 Tail (20-23 Vertebrae)	24 Hock Joint/Tarsus with Remaining 5 Bones	32 Radius
7 Occipital Crest	16 Pelvis with Iliac Wing	25 Metatarsus with 4 Bones	33 Ulna with Olecranon
8 Stop	17 Pelvic/Ischiac Tuber	26 Toes/Phalanges of the Hind Paws	34 Carpus/Wrist
9 Dorsal Cartilage	18 Hip Joint/ Acetabulum		35 Metacarpus Bones
10 Cervical Vertebrae (7)			36 Toes/Phalanges of the Front Paws

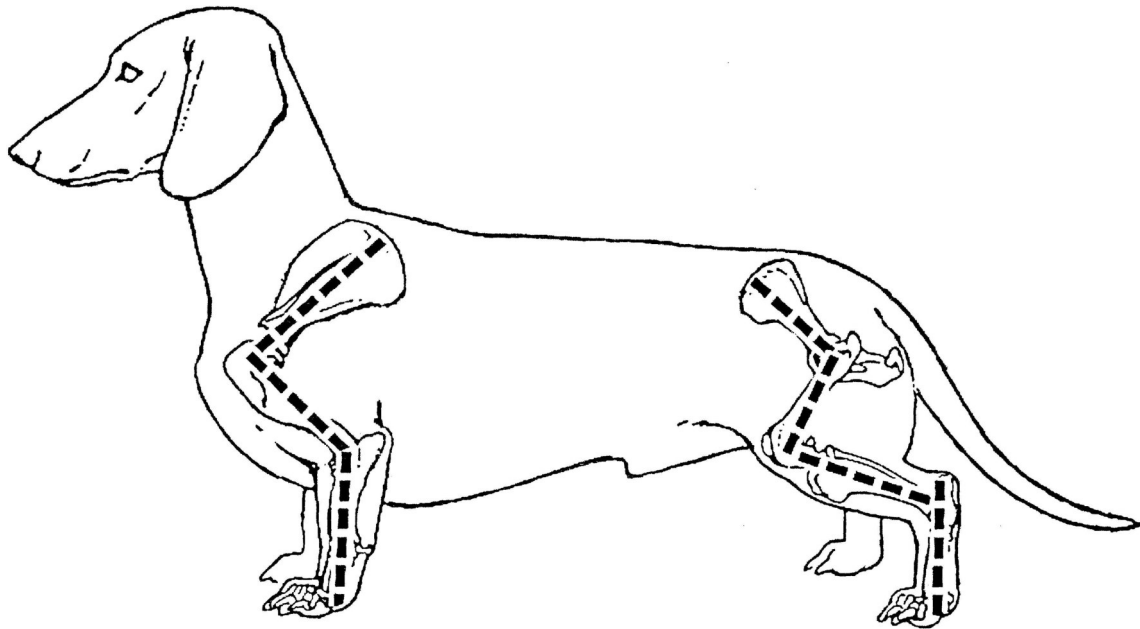
101.1

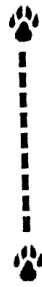
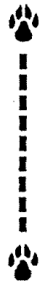
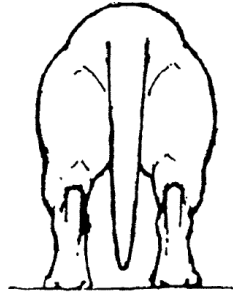
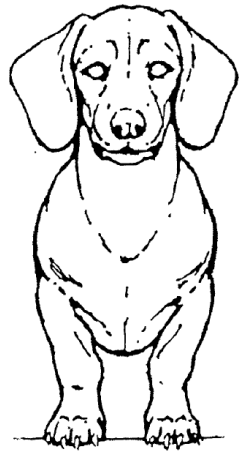
The Musculation



102.1

Correct Placing and Angulation of Fore- and Hindquarters

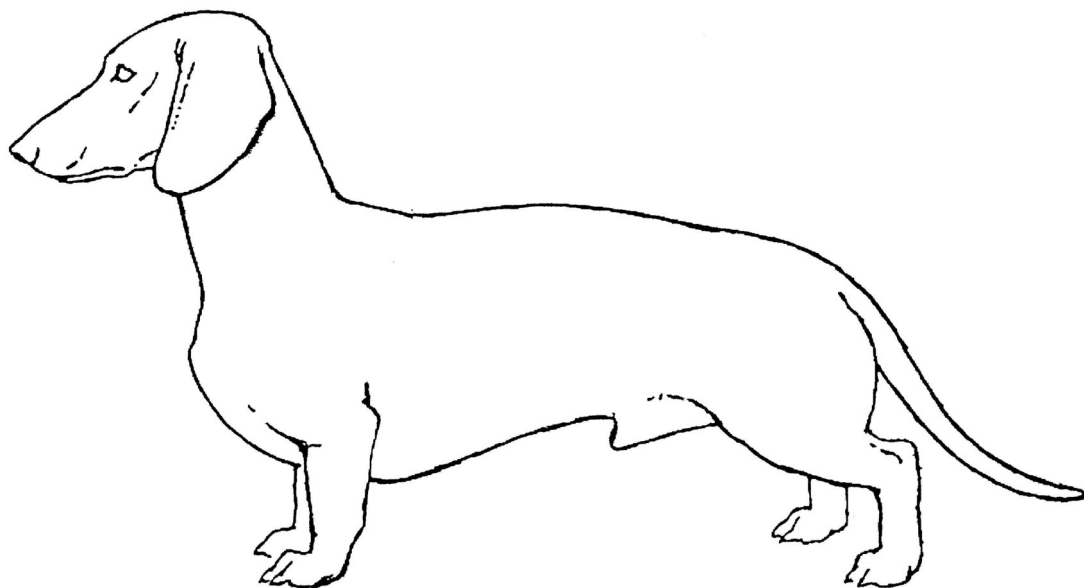




## Faults of the Upper Line

110.1

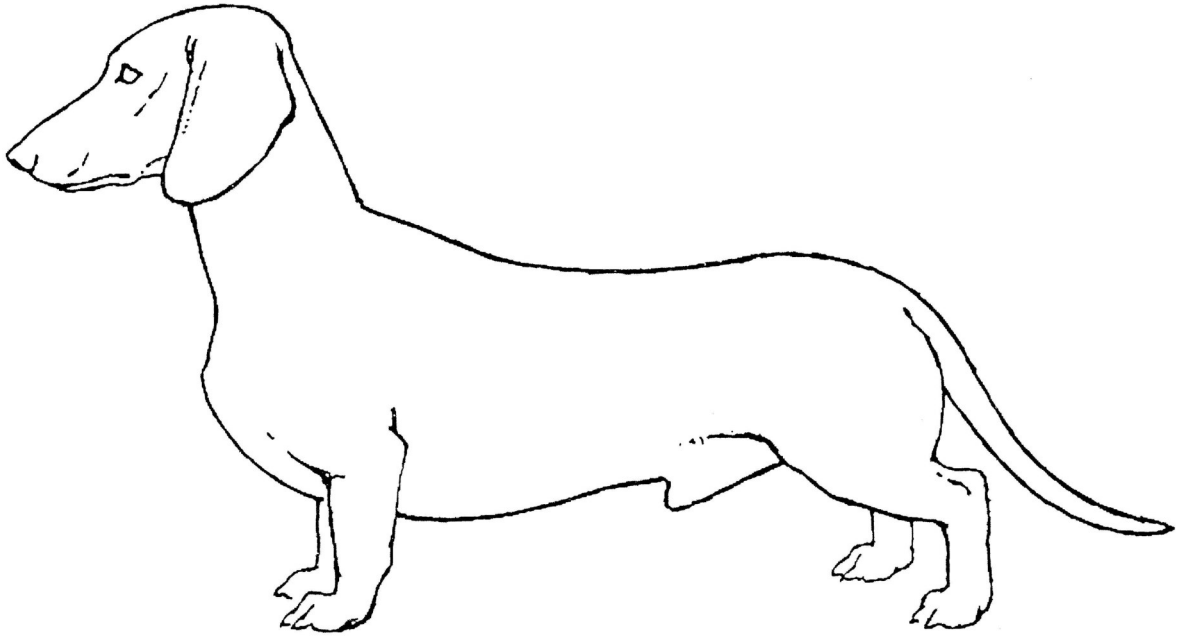
Roach Back (faulty)





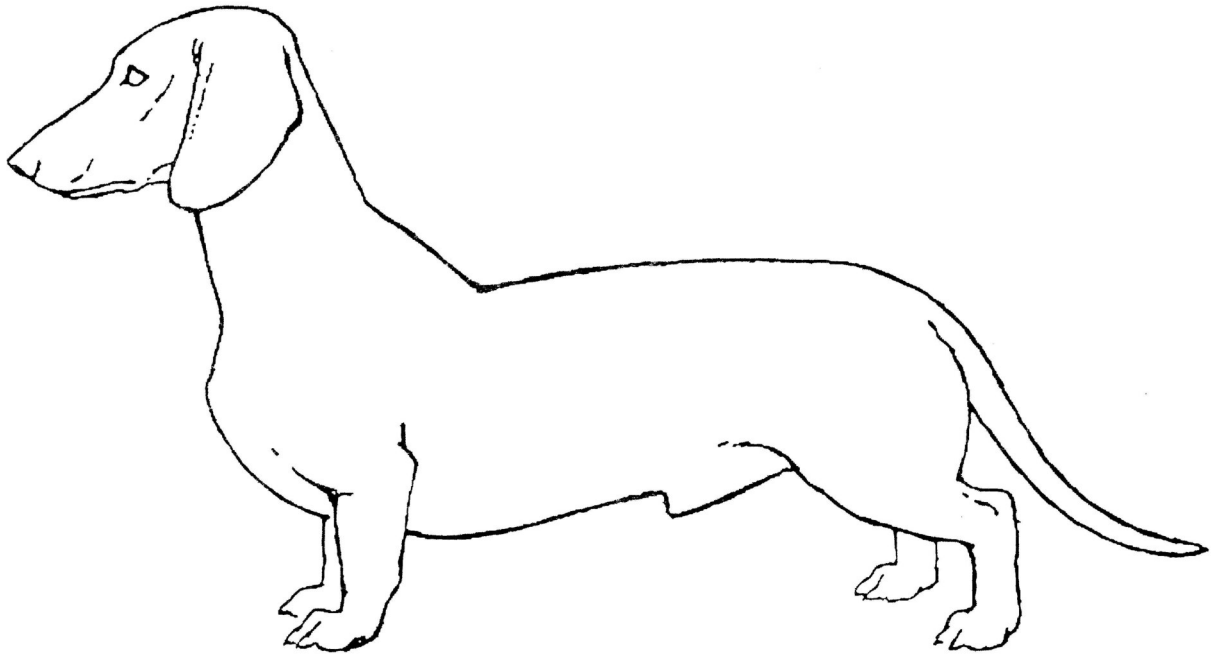
111.1

Hollow Back (faulty)



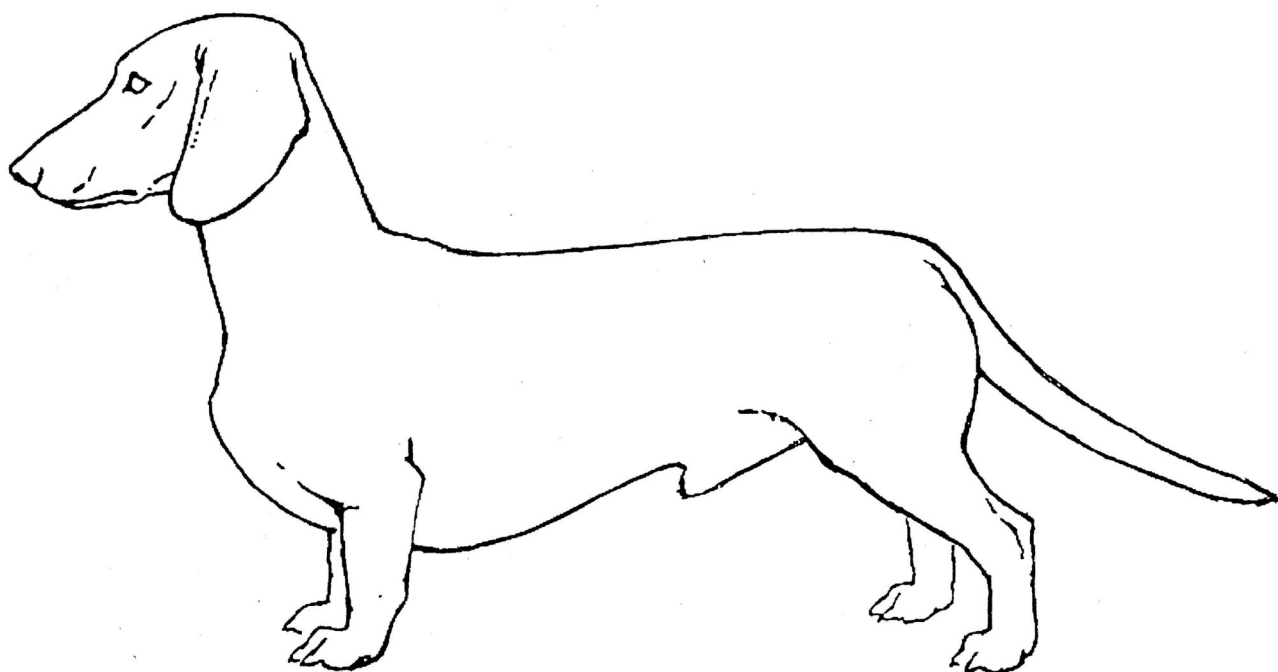
112.1

Pronounced Dip behind Withers (faulty)



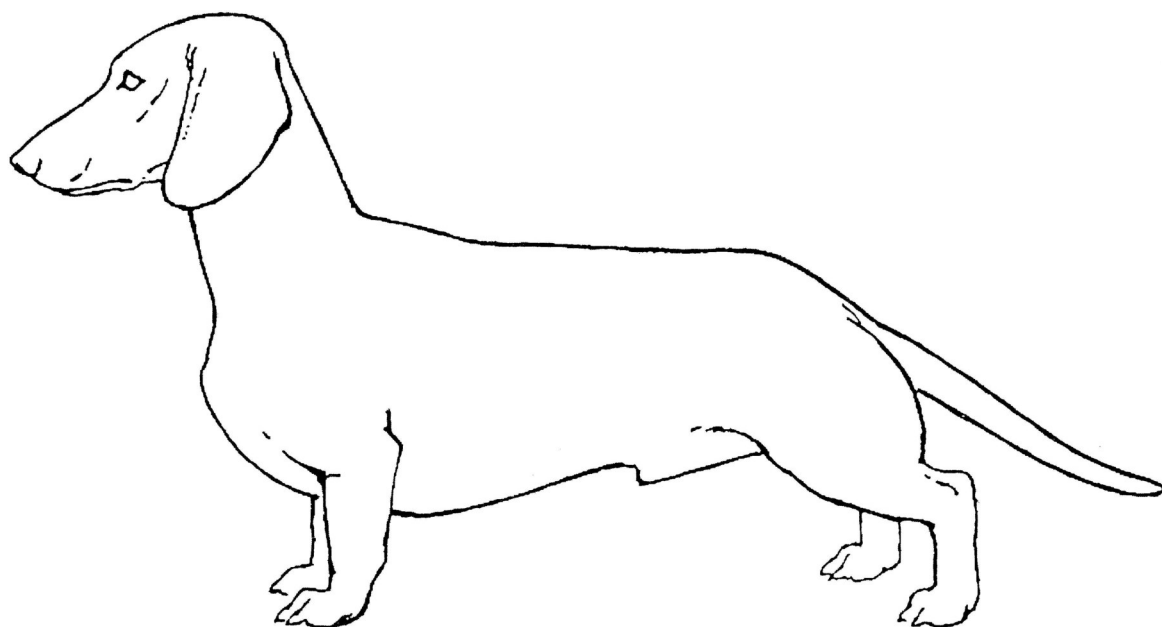
113.1

Inclining Topline - Higher in the Rear (faulty)



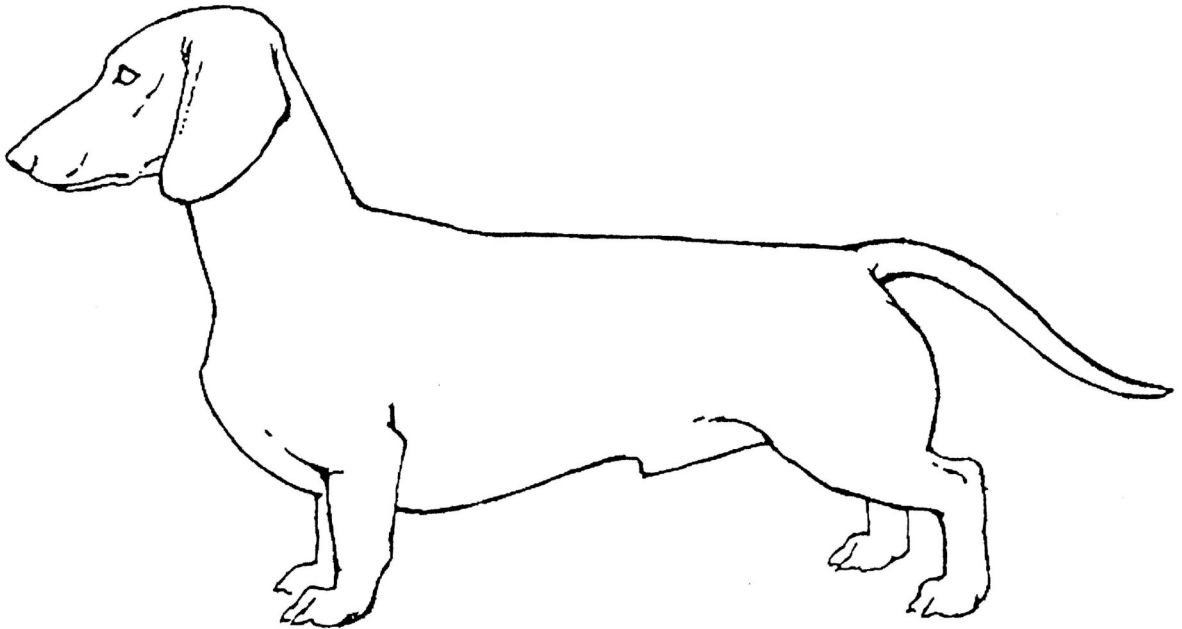
114.1

Severely falling-off Croup (faulty)



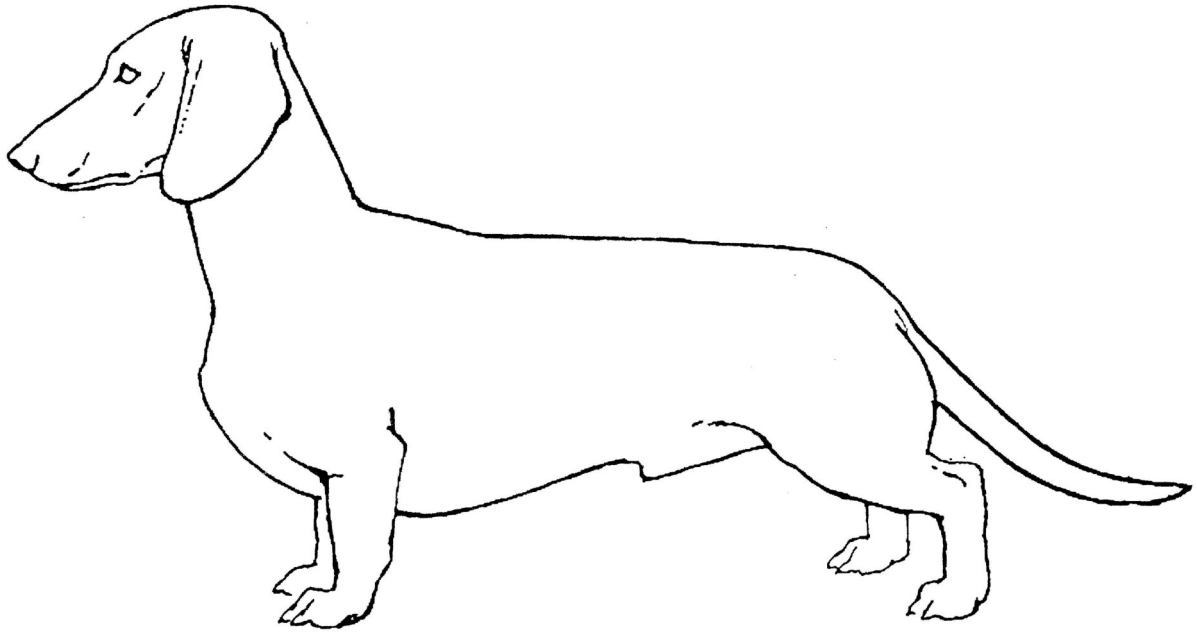
115.1

Tail Set too High (faulty)



116.1

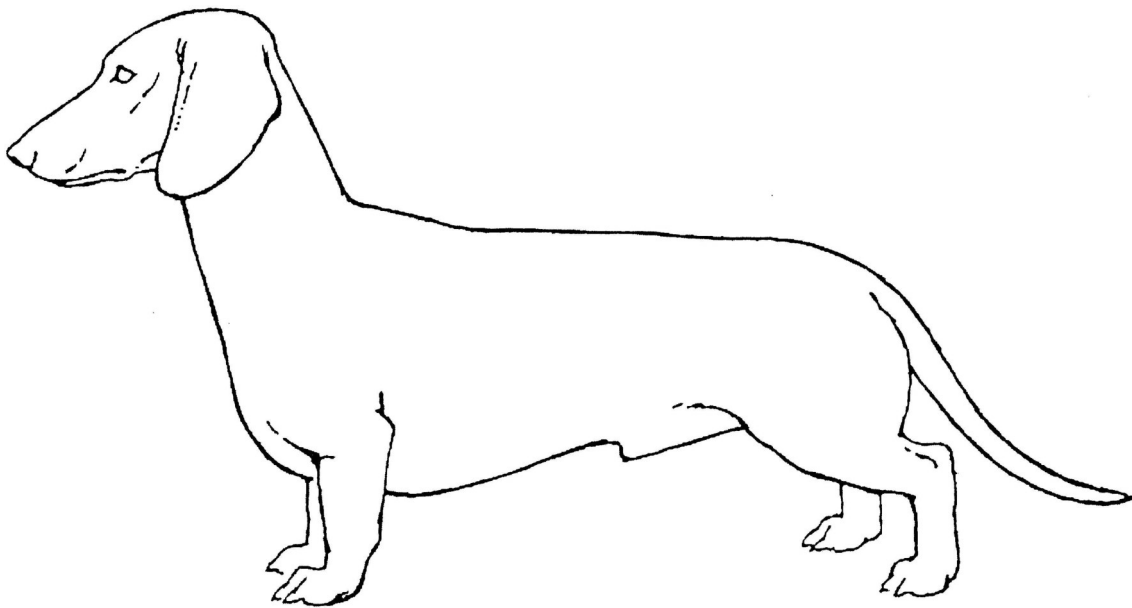
Tail Set too Low (faulty)



## Faults of the Chest and Underline

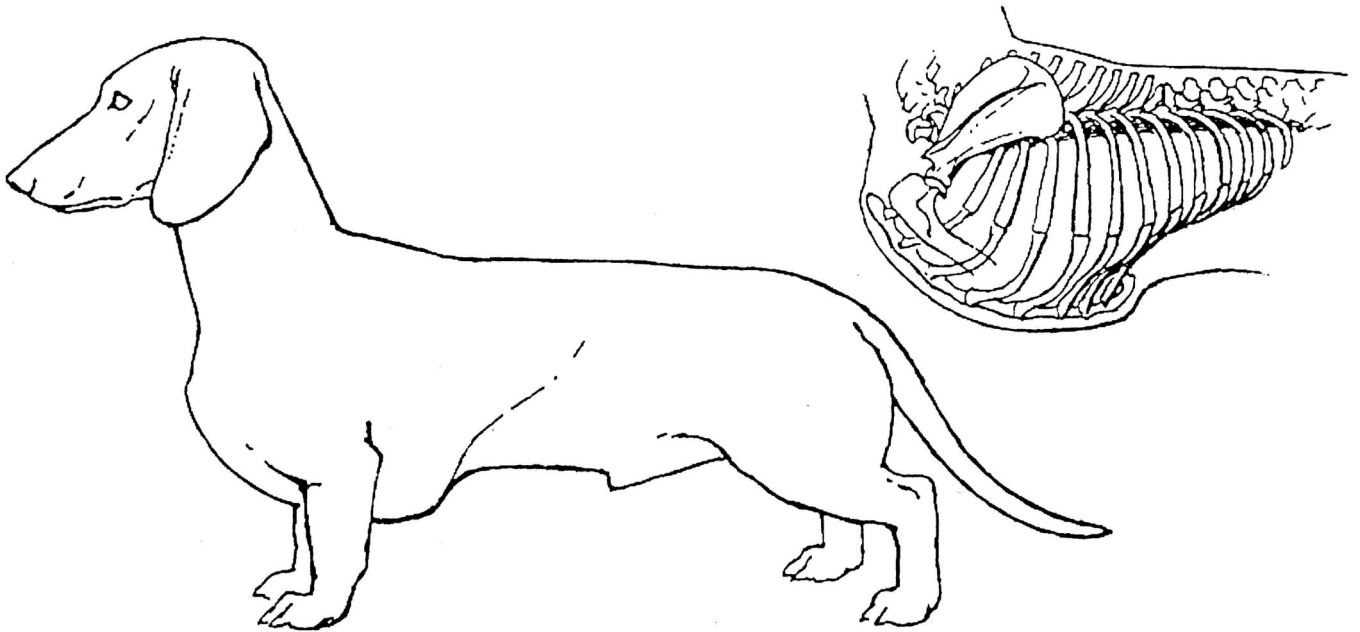
120.1

Insufficient Forechest (faulty)



121.1

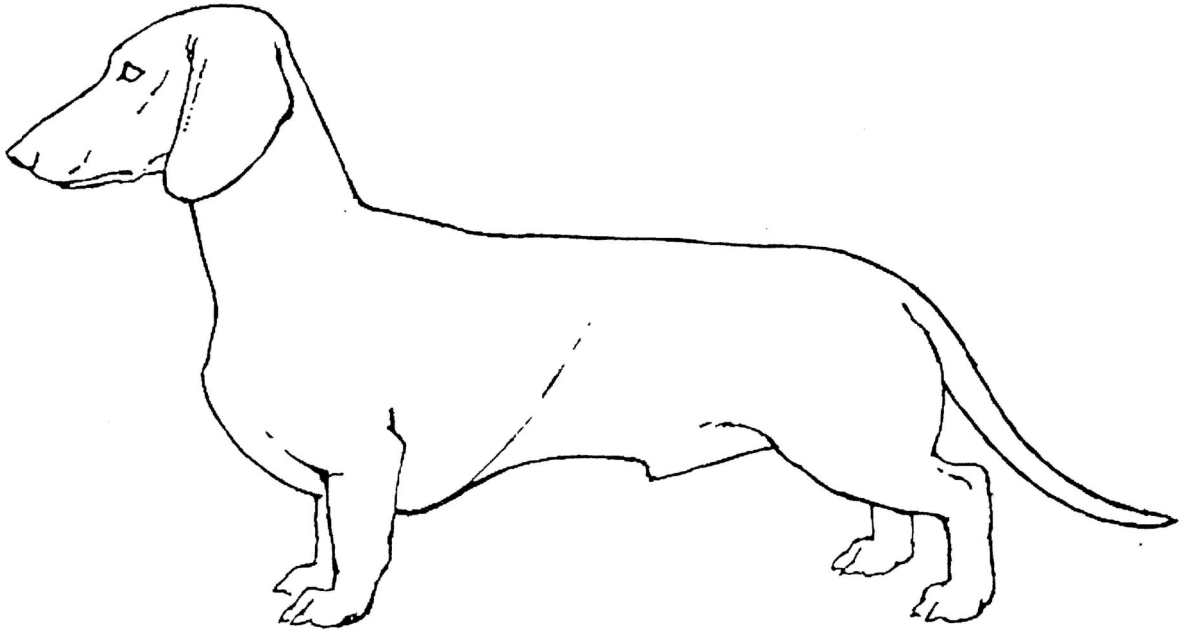
Cut-off Sternum (Eliminating Fault)





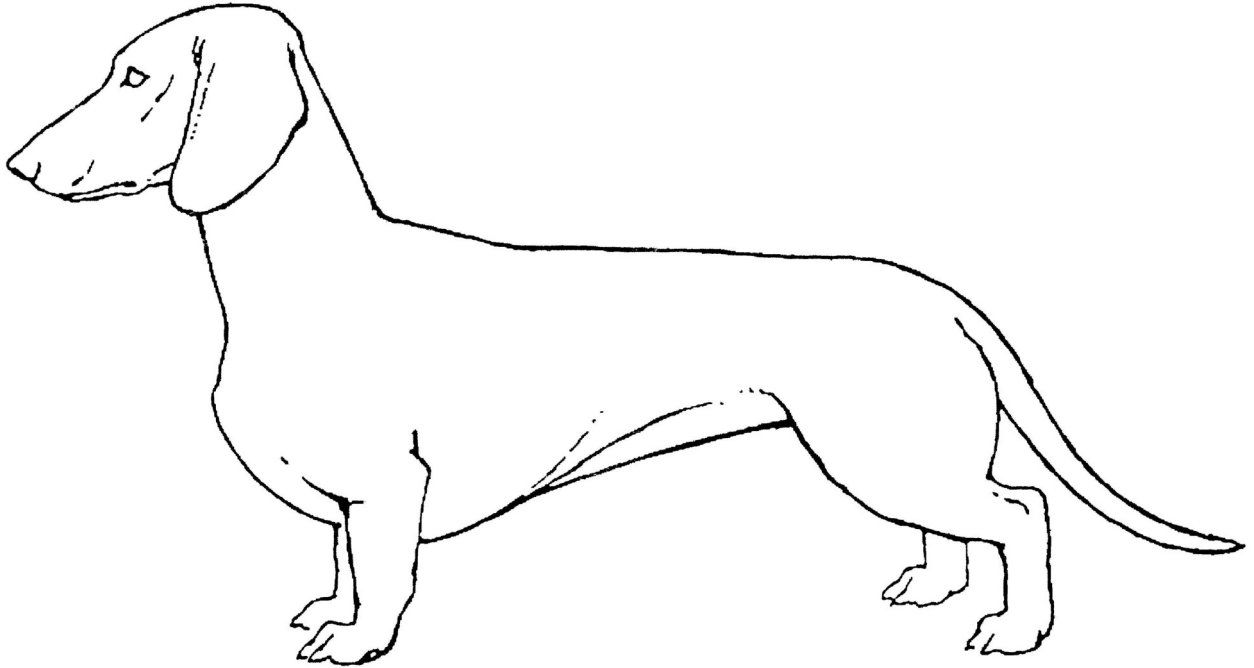
122.1

Short Ribbed Ribcage (faulty)



123.1

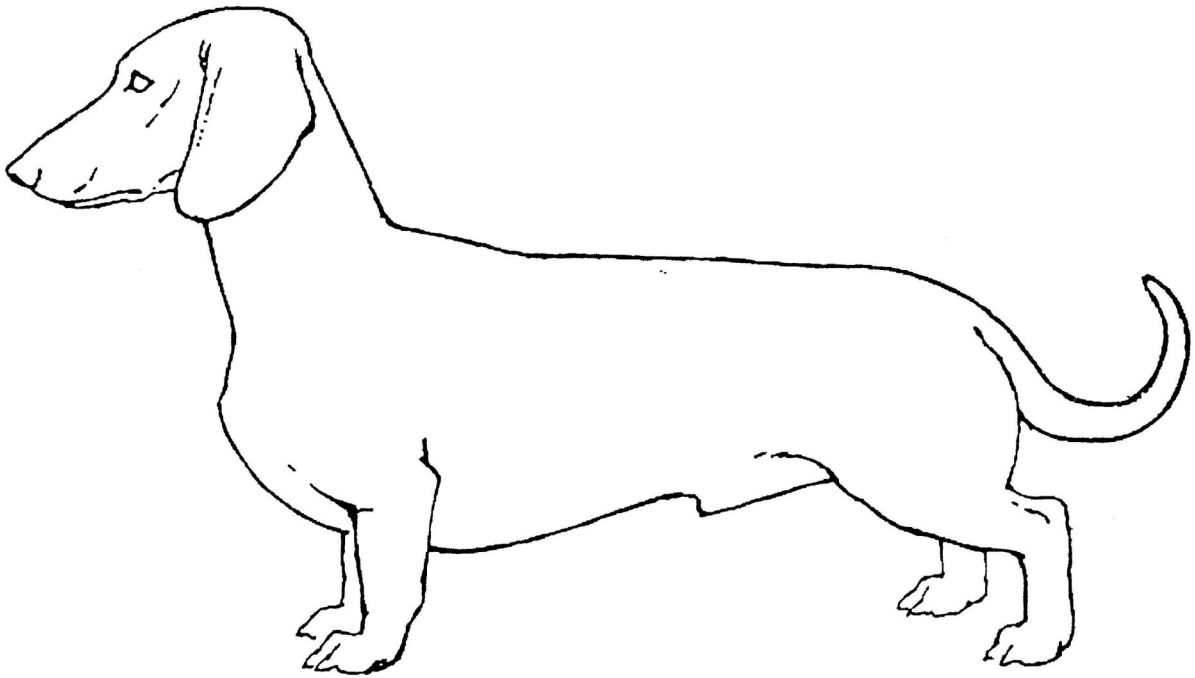
Whippety-Like Tuck-Up (Severe Fault)



**Tail Faults**

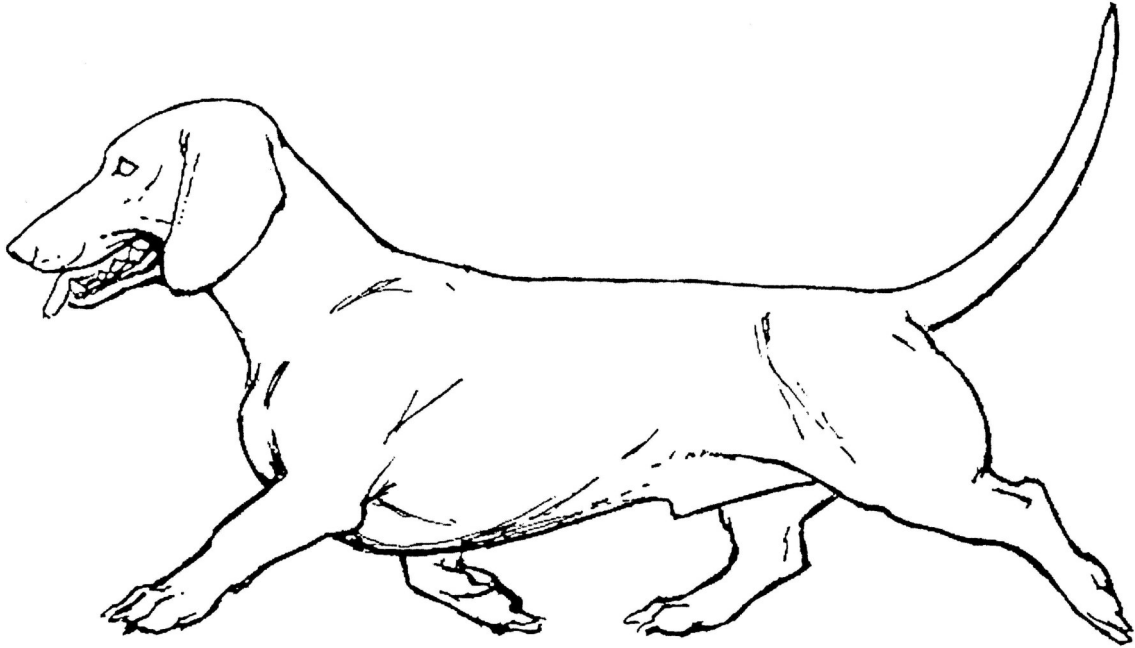
130.1

**Sickle Tail (faulty)**



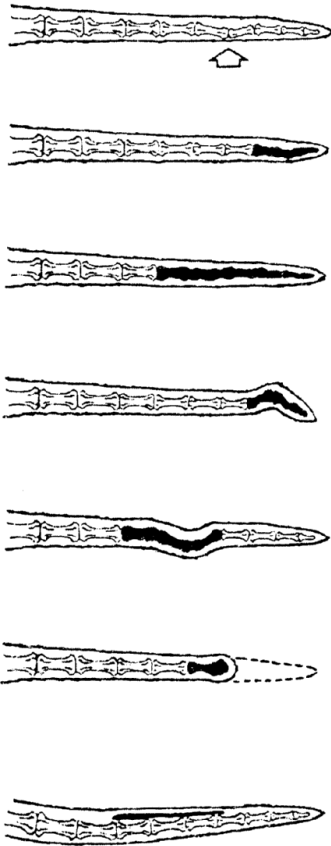
131.1

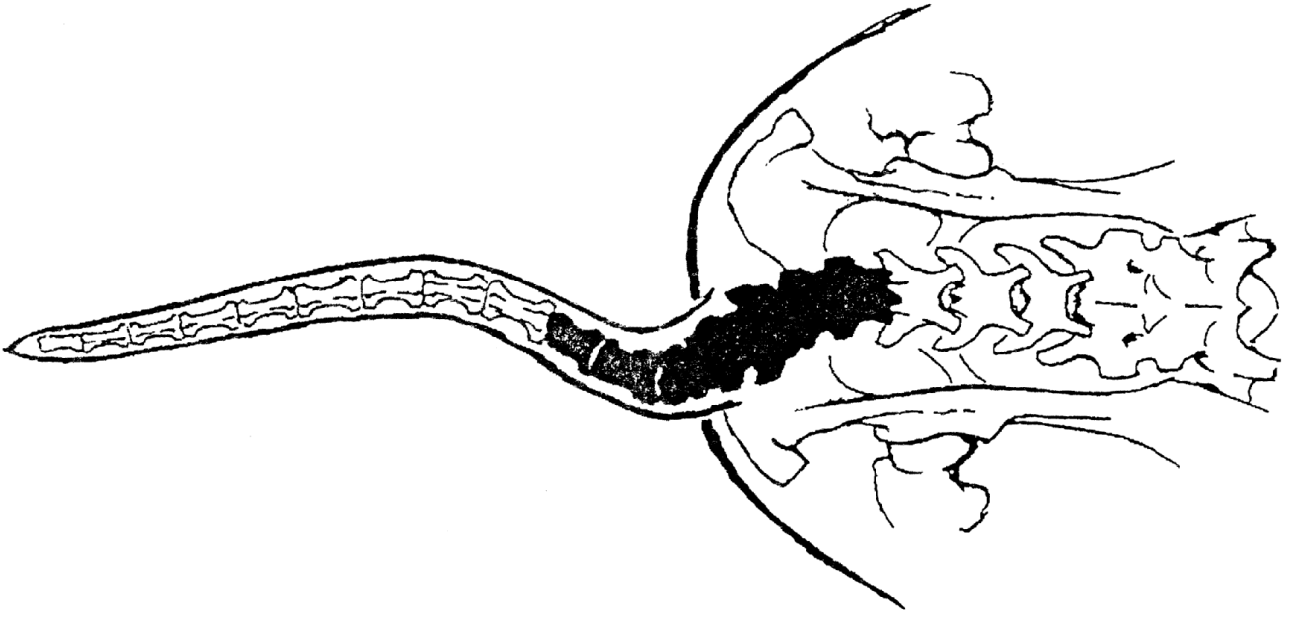
„Gay“ Tail (faulty)



132.1

Hereditary Tail Faults (Eliminating Faults)

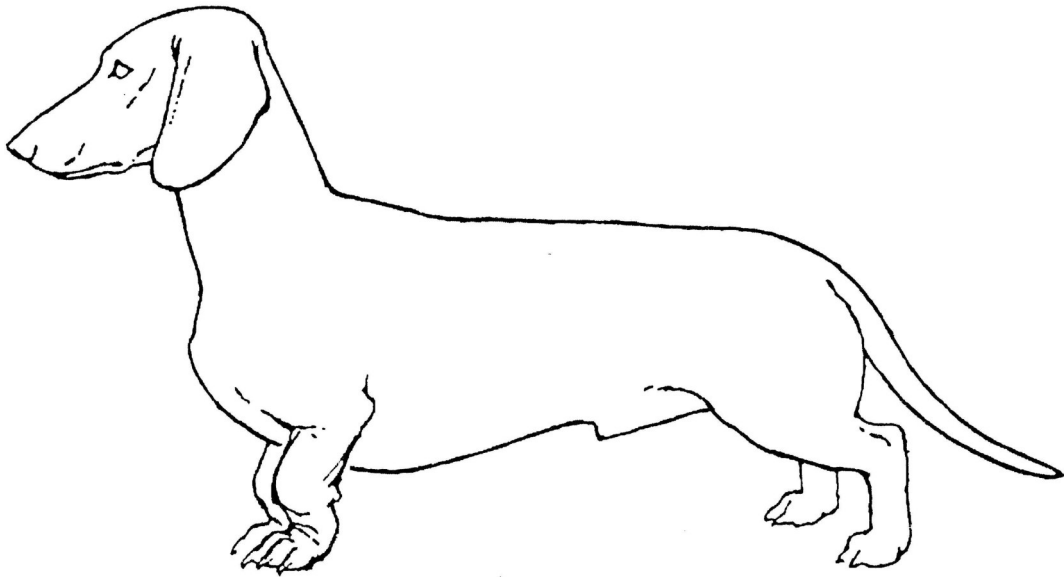




## Faults of the Forequarters

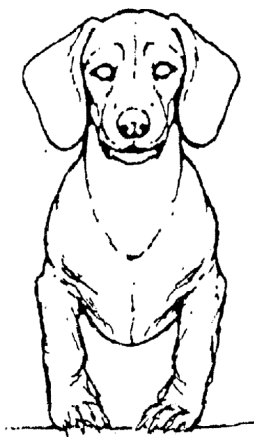
140.1

Knuckling over in the Wrist (Eliminating Fault)



141.1

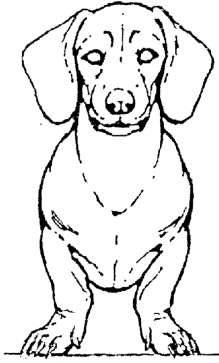
Toeing In (faulty)





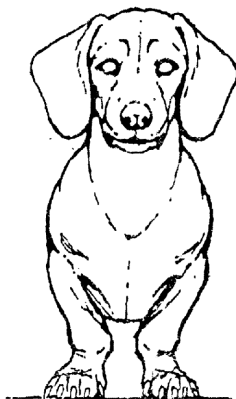
142.1

Toeing Out (faulty)



143.1

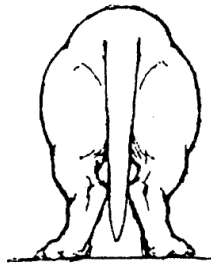
Severe Narrow Positioning of the Wrists (faulty)



## Faults of the Hindquarters

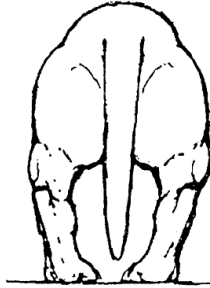
150.1

Cow-Hocked (faulty)



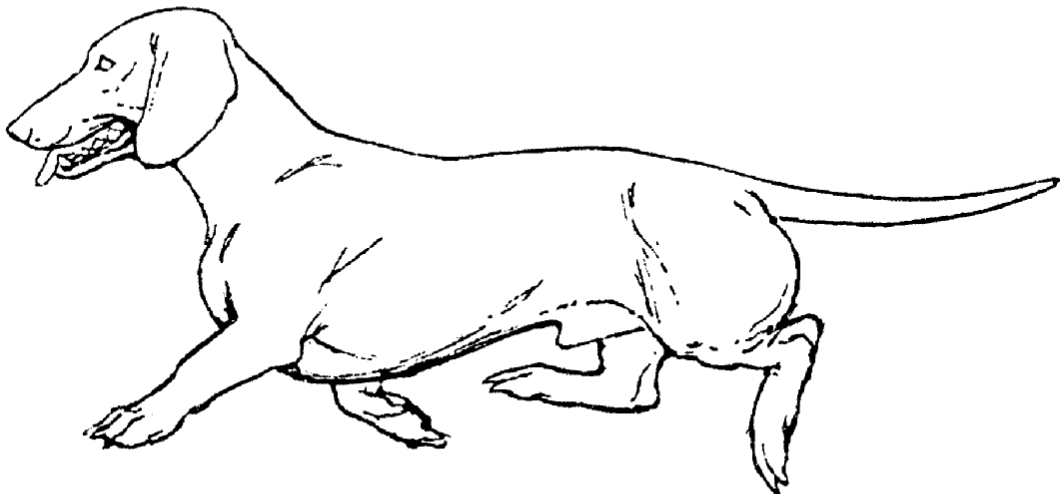
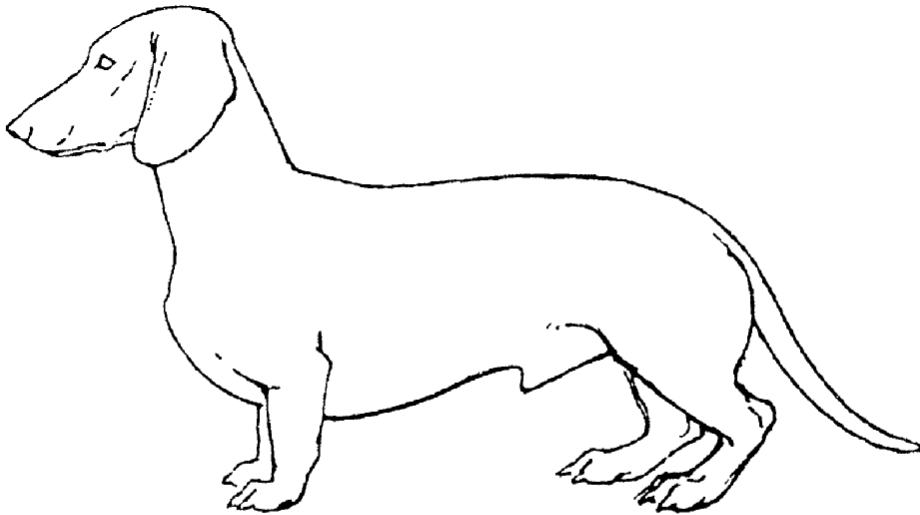
151.1

Bow-Legged (faulty)



152.1

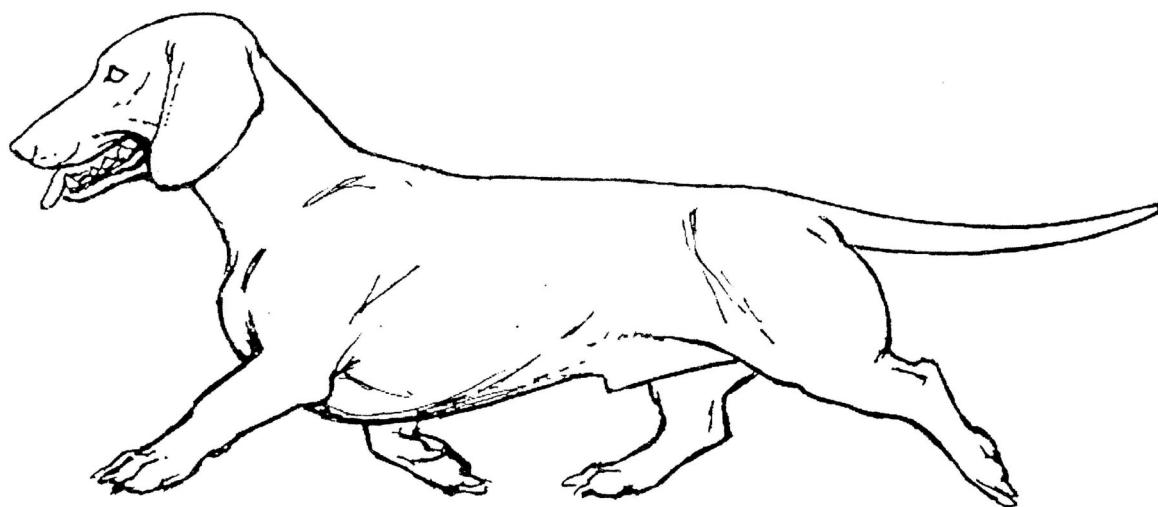
Hindquarters Too Far Under (faulty)



## The Gaiting Teckel

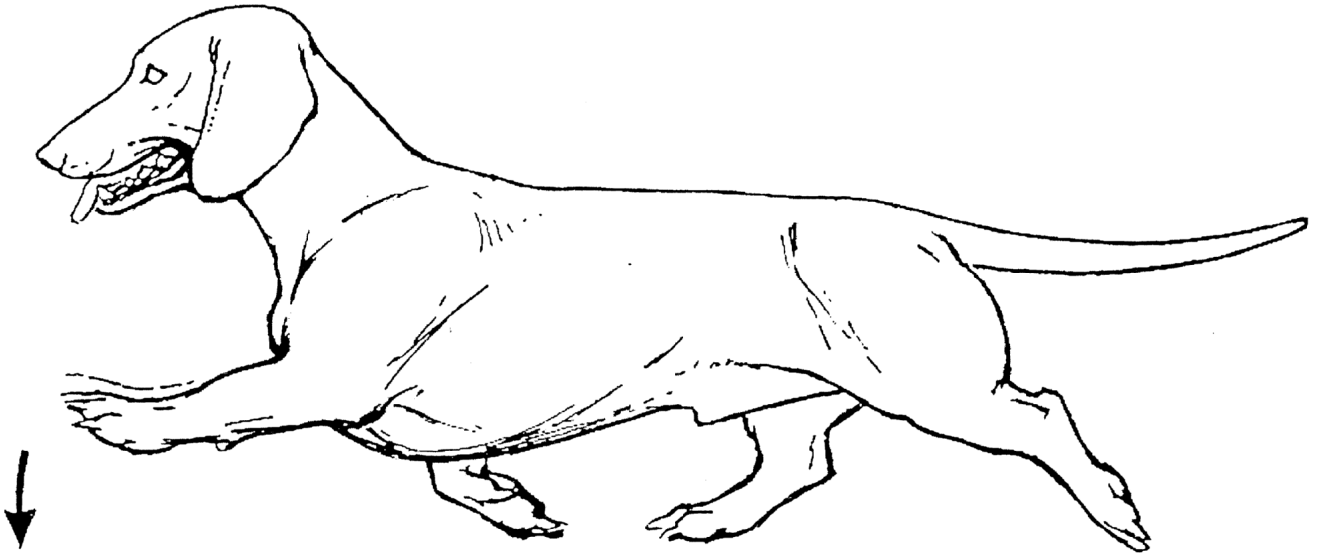
160.1

Correct Step and Drive



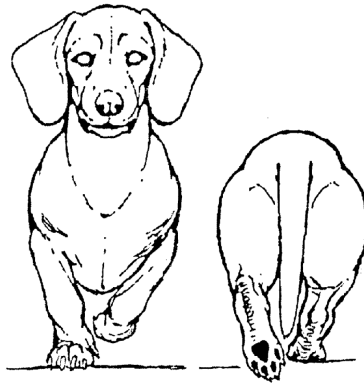
161.1

Goose Stepping or Hackney Gait (faulty)



162.1

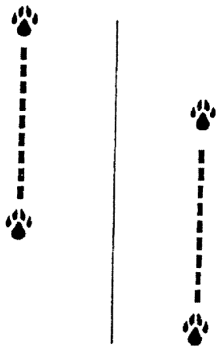
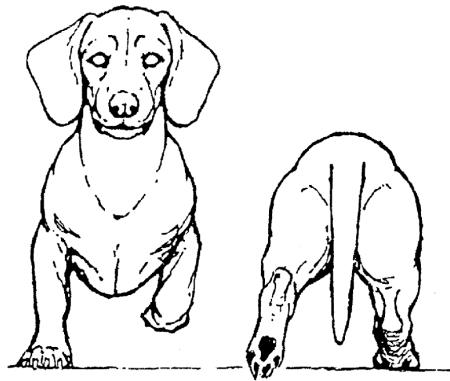
Gaiting Narrow (faulty)





163.1

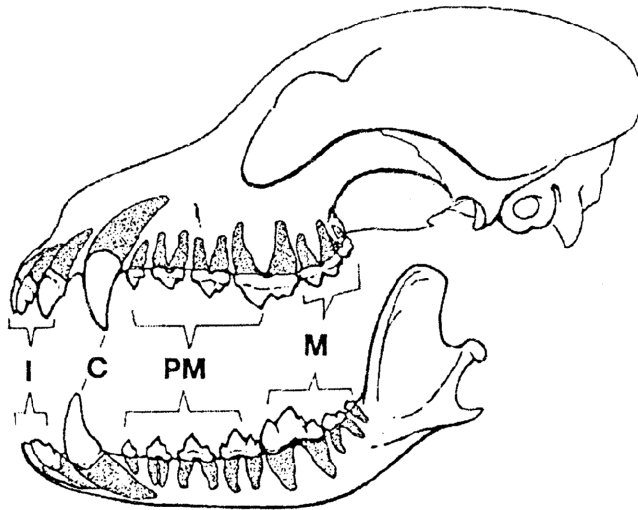
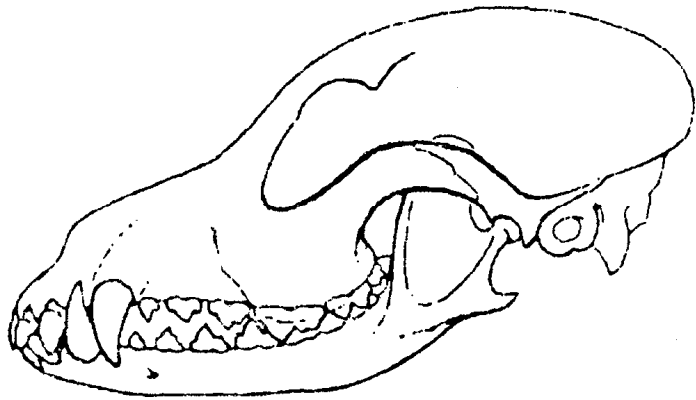
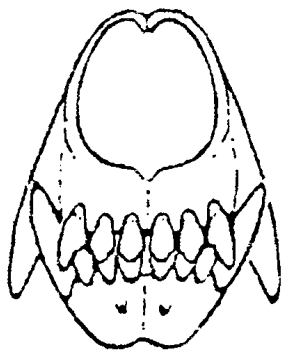
Gaiting Wide (faulty)

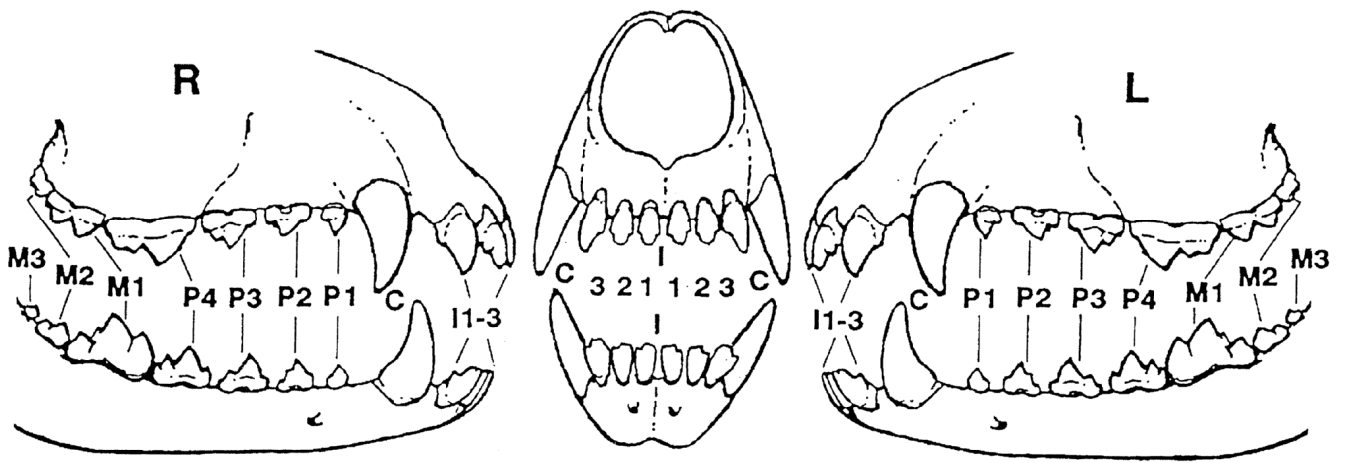


## Dentition and Bite

170.1

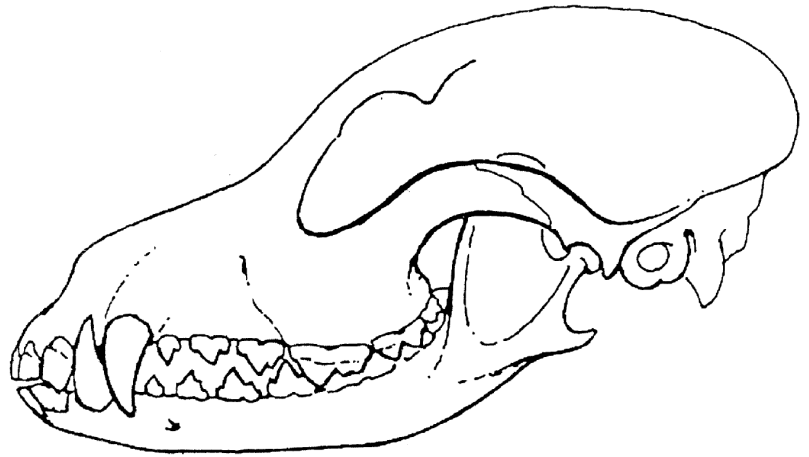
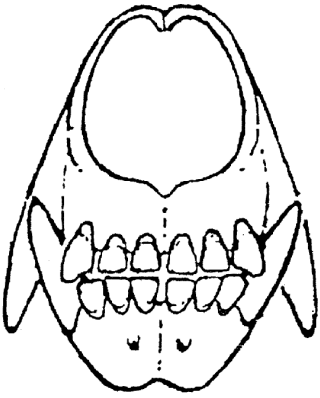
Scissor Bite, Teeth and Roots





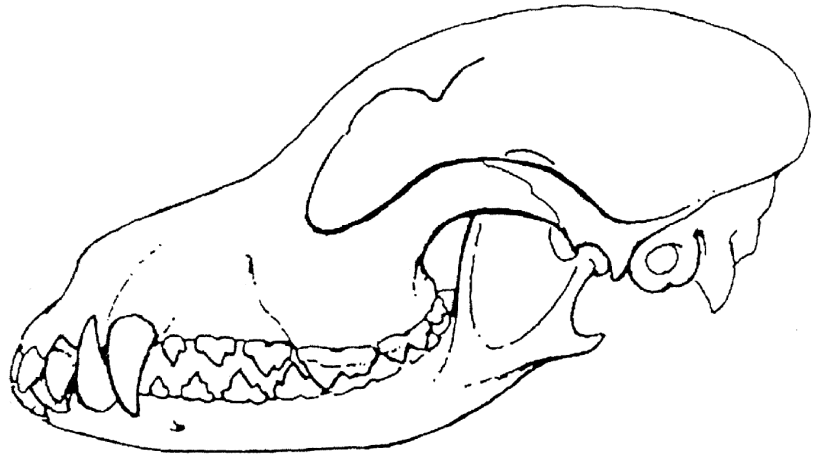
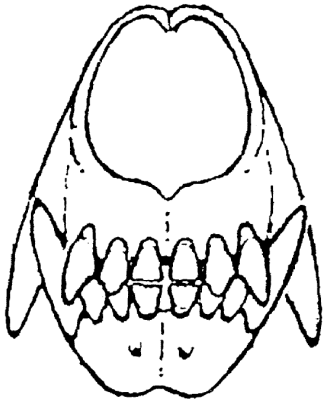
171.1

Pincer Bite (tolerated, faulty)



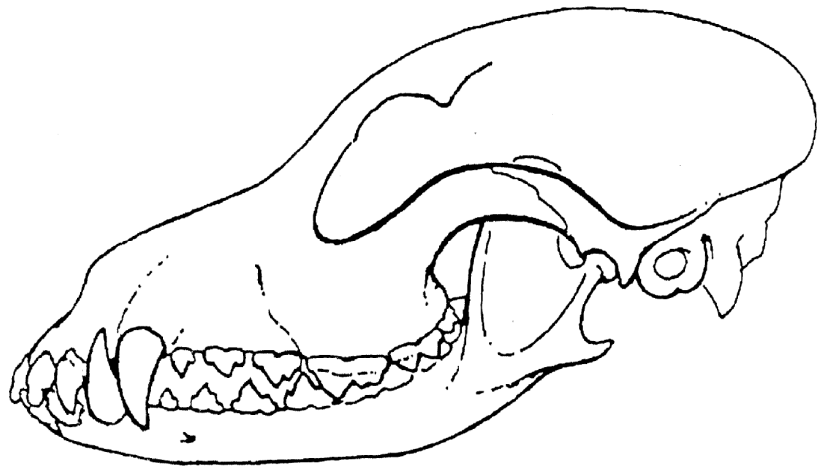
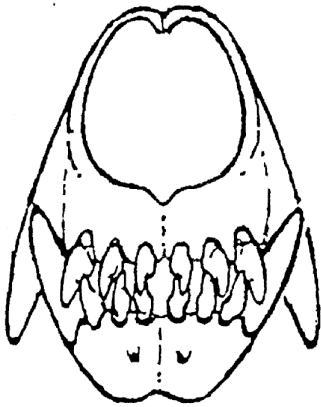
172.1

Partial Pincer Bite (tolerated, faulty)



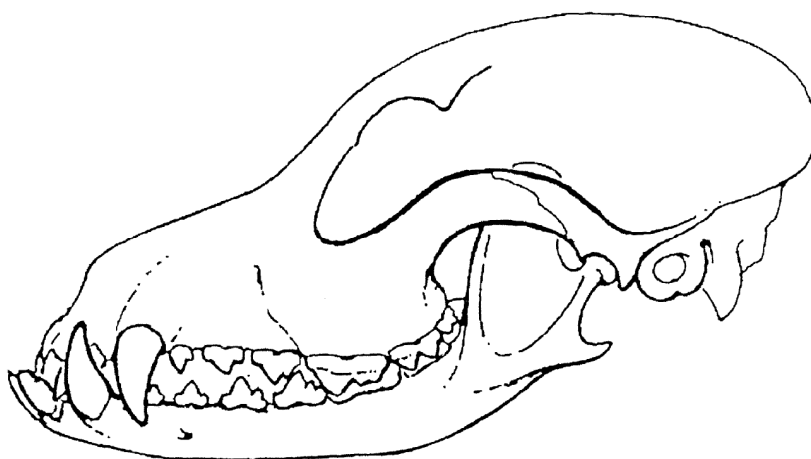
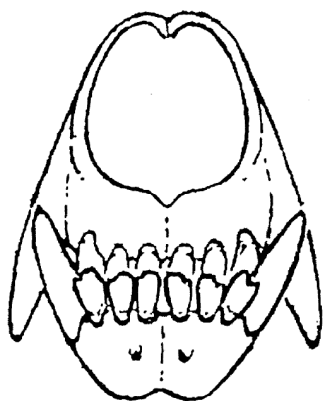
173.1

Kulissengebiss [Teeth not in Straight Line, some Teeth even Partially in Front of another Tooth] (faulty)



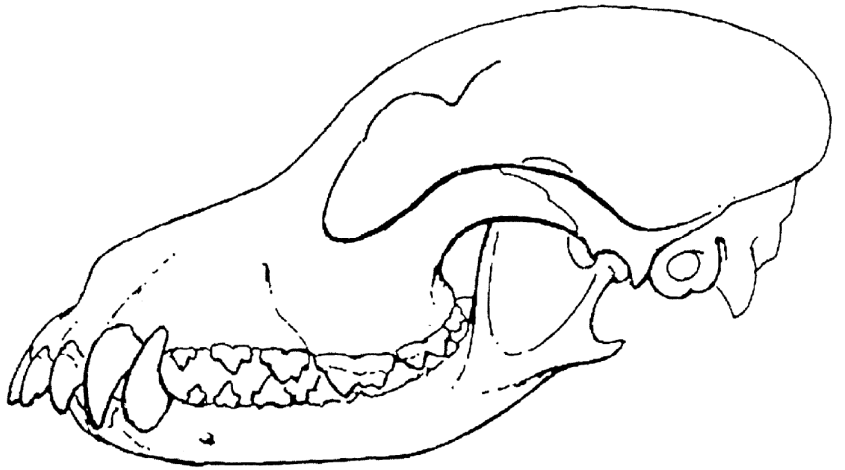
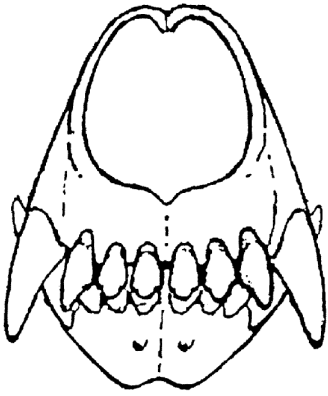
174.1

Overshot Mouth (Eliminating Fault)



175.1

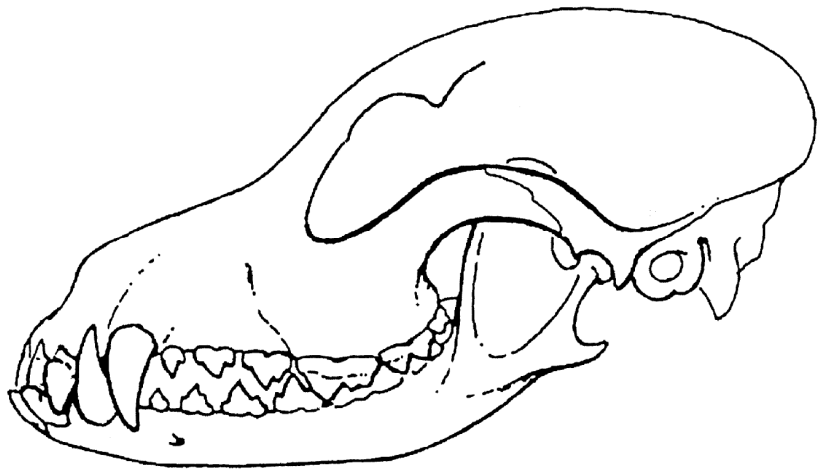
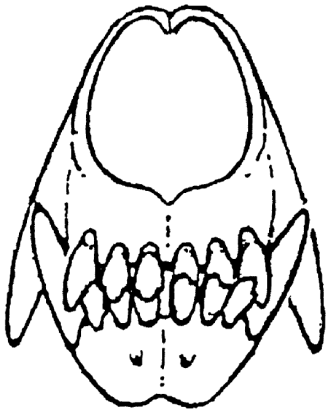
Undershot Mouth (Eliminating Fault)





176.1

Wry Mouth (Eliminating Fault)



177.1

Faulty Positioning of the Lower Canines (Eliminating Fault)

